

evo

FAB PRO

MATCH IT * MIX IT * TAKE IT AWAY



HAIR
LEVEL

DIRECT DYE * AMMONIA FREE * PEROXIDE FREE

DIRECTIONS: CUSTOMISED COLOUR MAINTENANCE



APPLICATION



MIXING

refer to menu for suggested formulas

TIMING

depending on hair condition and desired colour intensity

colour maintenance conditioner
match and maintain colour in-between salon visits.

add 80g fab pro formula (direct dye or direct dye and conditioner) to 200ml conditioner base. shake well.

3 minutes



MATCH IT * MIX IT * TAKE IT AWAY

DIRECTIONS: COLOUR SERVICE



1. identify the level, tone and length of hair.
2. select the appropriate colour formula from the mixologist menu, ensuring the formula works with the lightest level of hair.
3. measure and mix your formula.
4. prepare hair by shampooing, towel-dry hair evenly, then detangle and comb through.

APPLICATION



MIXING

refer to menu for suggested formulas

TIMING

depending on hair condition and desired colour intensity

colour refresh

refresh existing hair colour on mid-lengths and ends in-between all colour services (permanent, demi and semi-permanent colour).

mix fab pro direct dyes together.

5 – 15 minutes

colour fill*

darken lighter hair quickly, without damage.

*for filling formulas, see fab pro fill chart or visit evohair.com.

mix fab pro direct dyes together.

5 – 15 minutes

colour tone* / pastels

ideal for colour toning and can be diluted to create pastel shades.

*for extremely porous hair, you may need to dilute fab pro direct dye using conditioner base.

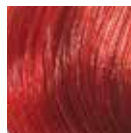
mix fab pro direct dyes together or with conditioner base.

5 – 15 minutes

DIRECT DYES



LEVEL 5



LEVEL 7



LEVEL 10

colour results are determined by the level, tone and formula you use. in order to accurately predict a colour result, you need to understand how the existing level and tone will contribute to the result; the lighter the level, the more intense the result. the darker the level, the deeper the result. all swatches within this menu are shown on a true, level 10 base.

LEGEND

BK — BLACK	G — GREEN	R — RED	CO — CONDITIONER
B — BLUE	O — ORANGE	V — VIOLET	
CH — CHOCOLATE	P — PLATINUM	Y — YELLOW	

BEIGE



ASH



NATURAL



COPPER



COPPER BROWN
SALON (20G)
10gR+8gO+2gB
RETAIL (80G)
40gR+32gO+8gB



DARK RED COPPER BLONDE
SALON (20G)
16gO+4gR
RETAIL (80G)
56gO+14gR+10gCO



INTENSE COPPER BLONDE
SALON (20G)
15gO+5gY
RETAIL (80G)
53gO+17gY+10gCO



GOLD COPPER BLONDE
SALON (20G)
16gY+4gO
RETAIL (80G)
40gY+10gO+30gCO



LIGHT GOLD COPPER BLONDE
SALON (20G)
6gY+3gO+5gCH+8gCO
RETAIL (80G)
18gY+9gO+9gCH+44gCO



COPPER TONER
SALON (20G)
0.5gO+0.5gCH+19gCO
RETAIL (80G)
5gO+5gCH+70gCO

CHESTNUT



CHESTNUT BROWN
SALON (20G)
12gCH+5gR+3gB
RETAIL (80G)
48gCH+20gR+12gB



CHESTNUT BLONDE
SALON (20G)
10gCH+6gY+4gO
RETAIL (80G)
30gCH+18gY+12gO+20gCO



COPPER CHESTNUT BLONDE
SALON (20G)
8gY+6gO+6gCH
RETAIL (80G)
28gY+21gO+21gCH+10gCO



LIGHT CHESTNUT BLONDE
SALON (20G)
5gCH+3gY+2gP+12gCO
RETAIL (80G)
16gCH+16gY+8gP+40gCO



CHESTNUT TONER
SALON (20G)
1gCH+1gP+18gCO
RETAIL (80G)
5gCH+3gP+70gCO

GOLD



DARK GOLD BLONDE
SALON (20G)
12gCH+6gY+2gO
RETAIL (80G)
48gCH+24gY+8gO



GOLD BLONDE
SALON (20G)
8gY+8gCH+4gCO
RETAIL (80G)
25gY+25gCH+30gCO



VERY LIGHT GOLD BLONDE
SALON (20G)
2gCH+2gY+0.5gO +15.5gCO
RETAIL (80G)
10gCH+10gY+2gO+58gCO



GOLD TONER
SALON (20G)
0.5gCH+0.5gY+19gCO
RETAIL (80G)
5gCH+5gY+70gCO

VIOLET



RED



TONERS



PASTEL



COLOUR SUGGESTION GUIDE

◐ SUGGESTED ● STRONGLY SUGGESTED

HAIR LEVEL	RED	YELLOW	BLUE	ORANGE	GREEN	VIOLET	CHOCOLATE	BLACK	PLATINUM	4 NATURAL	5 NATURAL	6 NATURAL	7 NATURAL	8 NATURAL	9 NATURAL	BLUE BLACK	ASH BROWN	DARK ASH BLONDE	LIGHT ASH BLONDE	ASH TONER	BEIGE BROWN	DARK BEIGE BLONDE	BEIGE BLONDE	BEIGE TONER	DARK GOLD BLONDE
10	●	●	◐	●	●	●	●	●	●						◐					●				◐	
9	●	●	●	●	●	●	●	●	●					◐	◐				◐	◐					
8	●	◐		●	◐	◐	●	●	◐				◐	◐	◐				●	◐			◐	◐	
7	●	◐		●	◐	◐	●	●				◐	◐	◐	◐			◐	◐			◐	◐	◐	◐
6	●			◐	◐	◐	●	●		◐	◐	◐	◐	◐	◐			◐	◐			◐	◐	◐	◐
5	●			◐	◐	◐	●	●		◐	◐	◐	◐	◐	◐		◐	◐			◐	◐	◐	◐	◐
4	◐					◐	◐	◐		◐	◐	◐	◐	◐	◐		◐	◐			◐	◐	◐	◐	◐
3							●	●		◐	◐	◐	◐	◐	◐		◐	◐			◐	◐	◐	◐	◐
2							●	●								◐	◐				◐	◐	◐	◐	◐
1							●	●								◐	◐								

HAIR LEVEL	GOLD BLONDE	VERY LIGHT GOLD BLONDE	GOLD TONER	CHESTNUT BROWN	CHESTNUT BLONDE	COPPER CHESTNUT BLONDE	LIGHT CHESTNUT BLONDE	CHESTNUT TONER	COPPER BROWN	DARK RED COPPER BLONDE	INTENSE COPPER BLONDE	GOLD COPPER BLONDE	LIGHT GOLD COPPER BLONDE	COPPER TONER	RED CHESTNUT BROWN	DARK RED BLONDE	COPPER RED BLONDE	RED BLONDE	LIGHT GOLD RED BLONDE	VIOLET BROWN	DARK RED VIOLET BLONDE	DARK ASH VIOLET BLONDE	DARK INTENSE VIOLET BLONDE	NATURAL VIOLET BLONDE	VIOLET TONER
10		◐	●					●																	●
9		◐	◐				◐	◐																	◐
8	◐	◐			◐	◐	◐	◐			◐	◐	◐												◐
7	◐	◐			◐	◐	◐	◐			◐	◐	◐			◐	◐	◐	◐						◐
6	◐				◐	◐	◐	◐		◐	◐	◐	◐			◐	◐	◐	◐		◐	◐	◐	◐	◐
5				◐					◐	◐	◐	◐	◐		◐	◐	◐	◐		◐	◐	◐	◐	◐	◐
4				◐				◐	◐						◐	◐	◐	◐		◐	◐	◐	◐	◐	◐
3				◐				◐	◐						◐	◐	◐	◐		◐	◐	◐	◐	◐	◐
2															◐	◐	◐	◐		◐	◐	◐	◐	◐	◐
1															◐	◐	◐	◐		◐	◐	◐	◐	◐	◐

HAIR LEVEL	PASTEL GREEN	PASTEL PINK	PASTEL ORANGE	PASTEL BLUE	PASTEL YELLOW	PLUSH BEIGE	CARAMEL LATTE	SMOKEY MAUVE	VINTAGE ROSE	SILVER FOX	OYSTER
10	●	●	●	●	●	◐	◐	◐	◐	◐	◐
9	◐	◐	◐	◐	◐	◐	◐	◐	◐	◐	◐
8											
7											
6											
5											
4											
3											
2											
1											

HAIR LEVEL	NEON YELLOW	FLAME	FUCHSIA	RUBY	LIME	JADE	LAVENDER	PLUM	COBALT	ULTRAMARINE
10	●	◐	●	◐	●	●	●	●	●	●
9	◐	◐	◐	◐	◐	◐	◐	◐	◐	◐
8		◐	◐	◐		◐	◐	◐	◐	◐
7		●		●		◐	◐	◐	◐	◐
6		◐		◐				◐		
5				◐				◐		
4										
3										
2										
1										

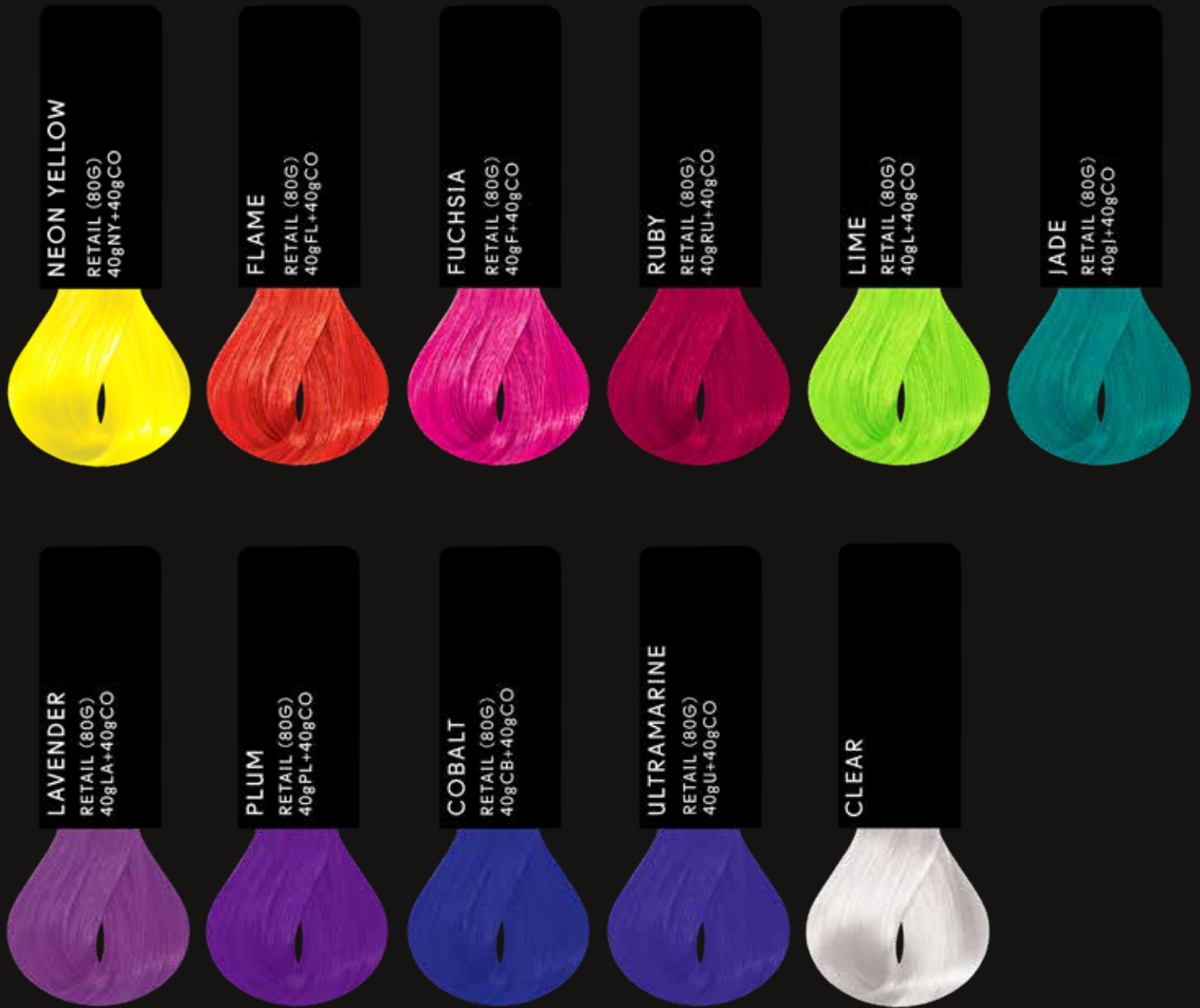
* DIRECT DYE * AMMONIA FREE * PEROXIDE FREE *
 * TOTAL RESPECT OF SCALP AND HAIR'S INTEGRITY *
 * NO PERMANENT COLOUR COMMITMENT *

VEGAN/ GLUTEN-FREE/ GIMMICK-FREE/ TESTED ON HUMANS

evo fab pro
 /evohair – @evopro – #fabpro
 evohair.com/pro

made in ukraine. evo labs pty. ltd. 17-21 commercial st. marleston sa 5033

INTENSE DIRECT DYES



- CB – COBALT
- FL – FLAME
- F – FUCSHIA
- J – JADE
- LA – LAVENDER
- L – LIME
- NY – NEON YELLOW
- PL – PLUM
- RU – RUBY
- U – ULTRAMARINE
- CO – CONDITIONER



STAINO by evo fab pro

staino is an intense direct dye containing a high concentration of pigment and nourishing ingredients for super-bright, long-lasting colour and shine.

COLOUR SERVICE

DIRECTIONS

1. identify the level, tone and length of hair.
2. select the appropriate colour from this menu, ensuring it works with the lightest level of hair.
3. prepare hair by shampooing, towel-dry hair evenly, then detangle and comb through.

APPLICATION



MIXING



TIMING

depending on hair condition and desired colour intensity

intense accent
create accent pieces and vibrant fashion shades.

mix staino intense direct dyes together.

20 – 30 minutes

intense pastels
dilute to create intense pastel shades.

mix staino intense direct dyes with clear.

20 minutes

CUSTOMISED RETAIL SERVICE

APPLICATION



MIXING



TIMING

depending on hair condition and desired colour intensity

intense colour maintenance conditioner*
match and maintain intense colour in-between salon visits.

add 80g staino formula (intense direct dye and conditioner) to 200ml conditioner base. shake well.

3 minutes

*for maximum colour intensity, substitute conditioner from chosen formula with staino intense direct dye (up to 80g) and add to fab pro conditioner base to produce a 280ml colour maintenance conditioner.