

evo

# FAB PRO

*MATCH IT \* MIX IT \* TAKE IT AWAY*



**DIRECT DYE \* AMMONIA FREE \* PEROXIDE FREE**

# DIRECTIONS: CUSTOMISED COLOUR MAINTENANCE



## APPLICATION



## MIXING

refer to menu for suggested formulas

## TIMING

depending on hair condition and desired colour intensity

colour maintenance conditioner  
match and maintain colour in-between salon visits.

add 80g fab pro formula (direct dye or direct dye and conditioner) to 200ml conditioner base. shake well.

3 minutes



MATCH IT \* MIX IT \* TAKE IT AWAY

# DIRECTIONS: COLOUR SERVICE



1. identify the level, tone and length of hair.
2. select the appropriate colour formula from the mixologist menu, ensuring the formula works with the lightest level of hair.
3. measure and mix your formula.
4. prepare hair by shampooing, towel-dry hair evenly, then detangle and comb through.

## APPLICATION



## MIXING

refer to menu for suggested formulas

## TIMING

depending on hair condition and desired colour intensity

### colour refresh

refresh existing hair colour on mid-lengths and ends in-between all colour services (permanent, demi and semi-permanent colour).

mix fab pro direct dyes together.

5 – 15 minutes

### colour fill\*

darken lighter hair quickly, without damage.

\*for filling formulas, see fab pro fill chart or visit [evohair.com](http://evohair.com).

mix fab pro direct dyes together.

5 – 15 minutes

### colour tone\* / pastels

ideal for colour toning and can be diluted to create pastel shades.

\*for extremely porous hair, you may need to dilute fab pro direct dye using conditioner base.

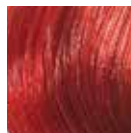
mix fab pro direct dyes together or with conditioner base.

5 – 15 minutes

# DIRECT DYES



LEVEL 5



LEVEL 7



LEVEL 10

colour results are determined by the level, tone and formula you use. in order to accurately predict a colour result, you need to understand how the existing level and tone will contribute to the result; the lighter the level, the more intense the result. the darker the level, the deeper the result. all swatches within this menu are shown on a true, level 10 base.

## LEGEND

BK — BLACK	G — GREEN	R — RED	CO — CONDITIONER
B — BLUE	O — ORANGE	V — VIOLET	
CH — CHOCOLATE	P — PLATINUM	Y — YELLOW	

## BEIGE



## ASH



## NATURAL



## COPPER



**COPPER BROWN**  
SALON (20G)  
10gR+8gO+2gB  
RETAIL (80G)  
40gR+32gO+8gB



**DARK RED COPPER BLONDE**  
SALON (20G)  
16gO+4gR  
RETAIL (80G)  
56gO+14gR+10gCO



**INTENSE COPPER BLONDE**  
SALON (20G)  
15gO+5gY  
RETAIL (80G)  
53gO+17gY+10gCO



**GOLD COPPER BLONDE**  
SALON (20G)  
16gY+4gO  
RETAIL (80G)  
40gY+10gO+30gCO



**LIGHT GOLD COPPER BLONDE**  
SALON (20G)  
6gY+3gO+5gCH+8gCO  
RETAIL (80G)  
18gY+9gO+9gCH+44gCO



**COPPER TONER**  
SALON (20G)  
0.5gO+0.5gCH+19gCO  
RETAIL (80G)  
5gO+5gCH+70gCO

## CHESTNUT



**CHESTNUT BROWN**  
SALON (20G)  
12gCH+5gR+3gB  
RETAIL (80G)  
48gCH+20gR+12gB



**CHESTNUT BLONDE**  
SALON (20G)  
10gCH+6gY+4gO  
RETAIL (80G)  
30gCH+18gY+12gO+20gCO



**COPPER CHESTNUT BLONDE**  
SALON (20G)  
8gY+6gO+6gCH  
RETAIL (80G)  
28gY+21gO+21gCH+10gCO



**LIGHT CHESTNUT BLONDE**  
SALON (20G)  
5gCH+3gY+2gP+12gCO  
RETAIL (80G)  
16gCH+16gY+8gP+40gCO



**CHESTNUT TONER**  
SALON (20G)  
1gCH+1gP+18gCO  
RETAIL (80G)  
5gCH+3gP+70gCO

## GOLD



**DARK GOLD BLONDE**  
SALON (20G)  
12gCH+6gY+2gO  
RETAIL (80G)  
48gCH+24gY+8gO



**GOLD BLONDE**  
SALON (20G)  
8gY+8gCH+4gCO  
RETAIL (80G)  
25gY+25gCH+30gCO



**VERY LIGHT GOLD BLONDE**  
SALON (20G)  
2gCH+2gY+0.5gO +15.5gCO  
RETAIL (80G)  
10gCH+10gY+2gO+58gCO



**GOLD TONER**  
SALON (20G)  
0.5gCH+0.5gY+19gCO  
RETAIL (80G)  
5gCH+5gY+70gCO

## VIOLET



## RED



## TONERS



## PASTEL





# COLOUR SUGGESTION GUIDE

◐ SUGGESTED ● STRONGLY SUGGESTED

HAIR LEVEL	RED	YELLOW	BLUE	ORANGE	GREEN	VIOLET	CHOCOLATE	BLACK	PLATINUM	4 NATURAL	5 NATURAL	6 NATURAL	7 NATURAL	8 NATURAL	9 NATURAL	BLUE BLACK	ASH BROWN	DARK ASH BLONDE	LIGHT ASH BLONDE	ASH TONER	BEIGE BROWN	DARK BEIGE BLONDE	BEIGE BLONDE	BEIGE TONER	DARK GOLD BLONDE
10	●	●	◐	●	●	●	●	●	●						◐					●				◐	
9	●	●	●	●	●	●	●	●	●					◐	●				◐	●				◐	
8	●	◐		●	◐	◐	●	●	◐				◐	●	●				●	◐			◐	◐	
7	●	◐		●	◐	◐	●	●	◐			◐	●	●	●			◐	◐	◐			◐	◐	◐
6	●			◐	◐	●	●	●	●		◐	●	◐	◐				◐	◐	◐		◐	◐	◐	◐
5	●			◐	◐	●	●	●	●		◐	●	◐				◐	◐		◐	◐	◐	◐	◐	◐
4	◐					◐	◐	●	●		◐	◐					◐	◐		◐	◐	◐	◐	◐	◐
3							●	●	●		◐	◐					◐	◐		◐	◐	◐	◐	◐	◐
2							●	●	●		◐	◐					◐	◐		◐	◐	◐	◐	◐	◐
1							●	●	●		◐	◐				◐	◐		◐	◐	◐	◐	◐	◐	◐

HAIR LEVEL	GOLD BLONDE	VERY LIGHT GOLD BLONDE	GOLD TONER	CHESTNUT BROWN	CHESTNUT BLONDE	COPPER CHESTNUT BLONDE	LIGHT CHESTNUT BLONDE	CHESTNUT TONER	COPPER BROWN	DARK RED COPPER BLONDE	INTENSE COPPER BLONDE	GOLD COPPER BLONDE	LIGHT GOLD COPPER BLONDE	COPPER TONER	RED CHESTNUT BROWN	DARK RED BLONDE	COPPER RED BLONDE	RED BLONDE	LIGHT GOLD RED BLONDE	VIOLET BROWN	DARK RED VIOLET BLONDE	DARK ASH VIOLET BLONDE	DARK INTENSE VIOLET BLONDE	NATURAL VIOLET BLONDE	VIOLET TONER
10		◐	●					●						●											●
9		◐	◐				◐	◐						◐					◐						◐
8	◐	◐			◐	◐	●				◐	◐	◐						◐					◐	◐
7	◐	◐			◐	◐	◐				◐	◐	◐			◐	◐	◐	◐					◐	◐
6	◐				◐	◐				◐	◐	◐	◐			◐	◐	◐	◐		◐	◐	◐	◐	◐
5				◐		◐			◐	◐	◐	◐			◐	◐	◐	◐		◐	◐	◐	◐	◐	◐
4				◐				◐	◐						◐	◐	◐	◐		◐	◐	◐	◐	◐	◐
3				◐				◐	◐						◐	◐	◐	◐		◐	◐	◐	◐	◐	◐
2								◐	◐						◐	◐	◐	◐		◐	◐	◐	◐	◐	◐
1								◐	◐						◐	◐	◐	◐		◐	◐	◐	◐	◐	◐

HAIR LEVEL	PASTEL GREEN	PASTEL PINK	PASTEL ORANGE	PASTEL BLUE	PASTEL YELLOW	PLUSH BEIGE	CARAMEL LATTE	SMOKEY MAUVE	VINTAGE ROSE	SILVER FOX	OYSTER
10	●	●	●	●	●	●	●	●	●	●	●
9	◐	◐	◐	◐	◐	◐	◐	◐	◐	◐	◐
8											
7											
6											
5											
4											
3											
2											
1											

HAIR LEVEL	NEON YELLOW	TANGERINE	FLAME	FUCHSIA	FLAMINGO	RUBY	LIME	IVY	JADE	LAVENDER	PLUM	COBALT	ULTRAMARINE
10	●	◐	◐	●	●	◐	●	●	●	●	●	●	●
9	◐	●	◐	◐	◐	◐	◐	◐	◐	◐	◐	◐	◐
8		●	◐	◐	◐	◐	◐	◐	◐	◐	◐	◐	◐
7		◐	●			●			◐			●	◐
6			◐			●					◐		◐
5						◐					◐		◐
4													
3													
2													
1													

\* DIRECT DYE \* AMMONIA FREE \* PEROXIDE FREE \*  
 \* TOTAL RESPECT OF SCALP AND HAIR'S INTEGRITY \*  
 \* NO PERMANENT COLOUR COMMITMENT \*

VEGAN/ GLUTEN-FREE/ GIMMICK-FREE/ TESTED ON HUMANS

evo fab pro  
 /evohair – @evopro – #fabpro  
 evohair.com/pro

made in ukraine. evo labs pty. ltd. 17-21 commercial st. marleston sa 5033

# INTENSE DIRECT DYES



<b>NEON YELLOW</b> RETAIL (80G) 40gNY+40gCO	<b>TANGERINE</b> RETAIL (80G) 40gTA+40gCO	<b>FLAME</b> RETAIL (80G) 40gFL+40gCO	<b>FUCHSIA</b> RETAIL (80G) 40gF+40gCO	<b>FLAMINGO</b> RETAIL (80G) 40gFM+40gCO	<b>RUBY</b> RETAIL (80G) 40gRU+40gCO
<b>LIME</b> RETAIL (80G) 40gL+40gCO	<b>IVY</b> RETAIL (80G) 40gI+40gCO	<b>JADE</b> RETAIL (80G) 40gJ+40gCO	<b>LAVENDER</b> RETAIL (80G) 40gLA+40gCO	<b>PLUM</b> RETAIL (80G) 40gPL+40gCO	<b>COBALT</b> RETAIL (80G) 40gCB+40gCO
<b>ULTRAMARINE</b> RETAIL (80G) 40gU+40gCO	<b>CLEAR</b>	<b>Legend:</b> NY - NEON YELLOW TA - TANGERINE FL - FLAME F - FUCHSIA FM - FLAMINGO RU - RUBY L - LIME I - IVY J - JADE LA - LAVENDER PL - PLUM CB - COBALT U - ULTRAMARINE CL - CLEAR CO - CONDITIONER			



# STAINO by evo fab pro

staino is an intense direct dye containing a high concentration of pigment and nourishing ingredients for super-bright, long-lasting colour and shine.

## COLOUR SERVICE

### DIRECTIONS

1. identify the level, tone and length of hair.
2. select the appropriate colour from this menu, ensuring it works with the lightest level of hair.
3. prepare hair by shampooing, towel-dry hair evenly, then detangle and comb through.

### APPLICATION



### MIXING



### TIMING

depending on hair condition and desired colour intensity

**intense accent**  
create accent pieces and vibrant fashion shades.

mix staino intense direct dyes together.

20 – 30 minutes

**intense pastels**  
dilute to create intense pastel shades.

mix staino intense direct dyes with clear.

20 minutes

## CUSTOMISED RETAIL SERVICE

### APPLICATION



### MIXING



### TIMING

depending on hair condition and desired colour intensity

**intense colour maintenance conditioner\***  
match and maintain intense colour in-between salon visits.

add 80g staino formula (maximum 40g intense direct dye and conditioner) to 200ml conditioner base shake well.

3 minutes

\*for maximum colour intensity, substitute conditioner from chosen formula with staino intense direct dye (up to 80g) and add to fab pro conditioner base to produce a 280ml colour maintenance conditioner.